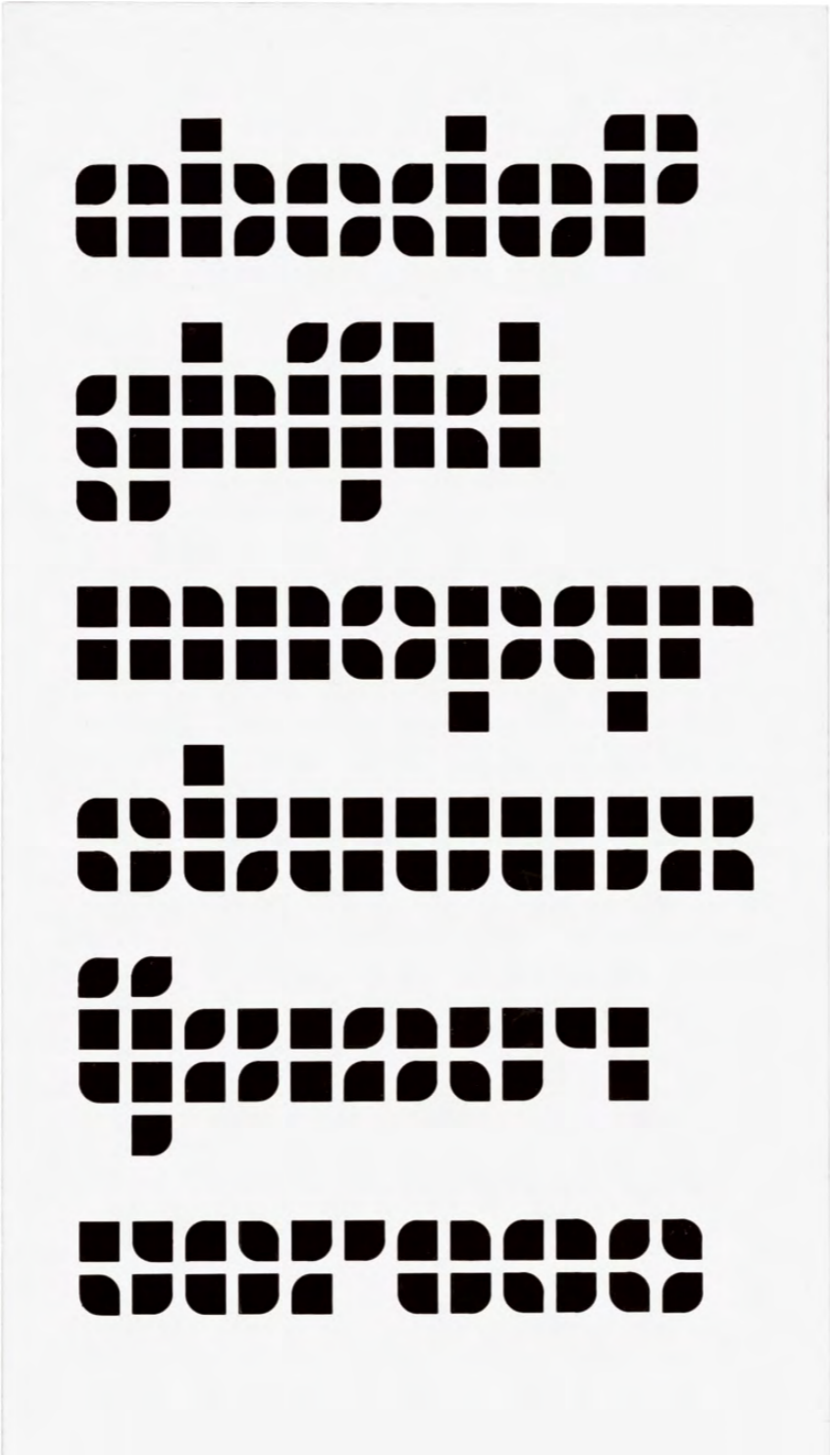


**Jurriaan
Schrofer**



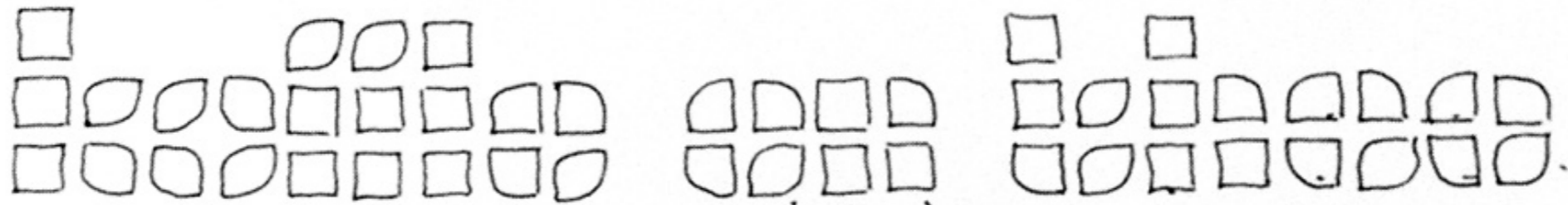
1926–1990



**Alphabet for supermarket De Gruyter, 1963.
Based on a square, quarter of a circle, and a leaf**

③

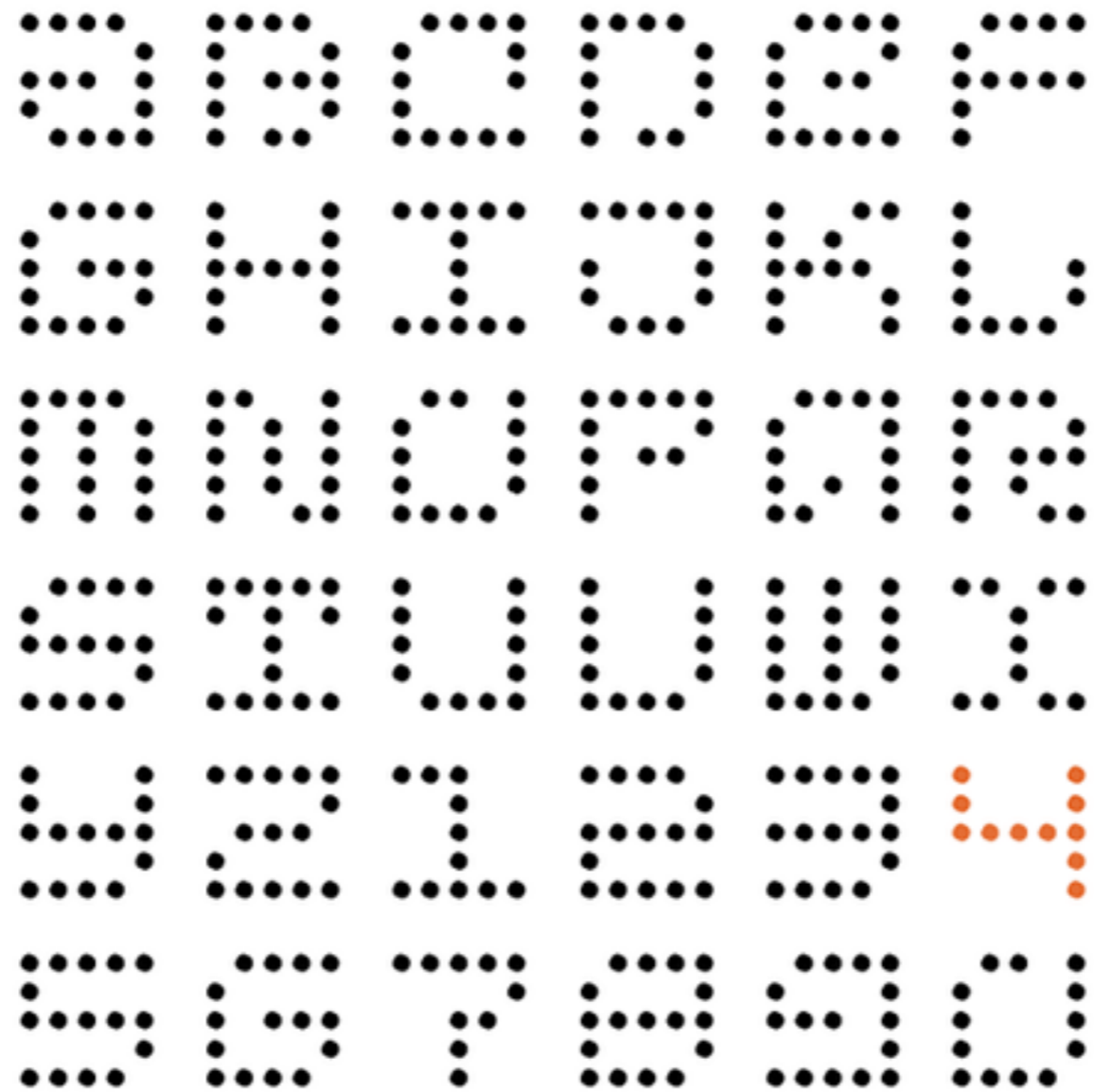
noy tehenen



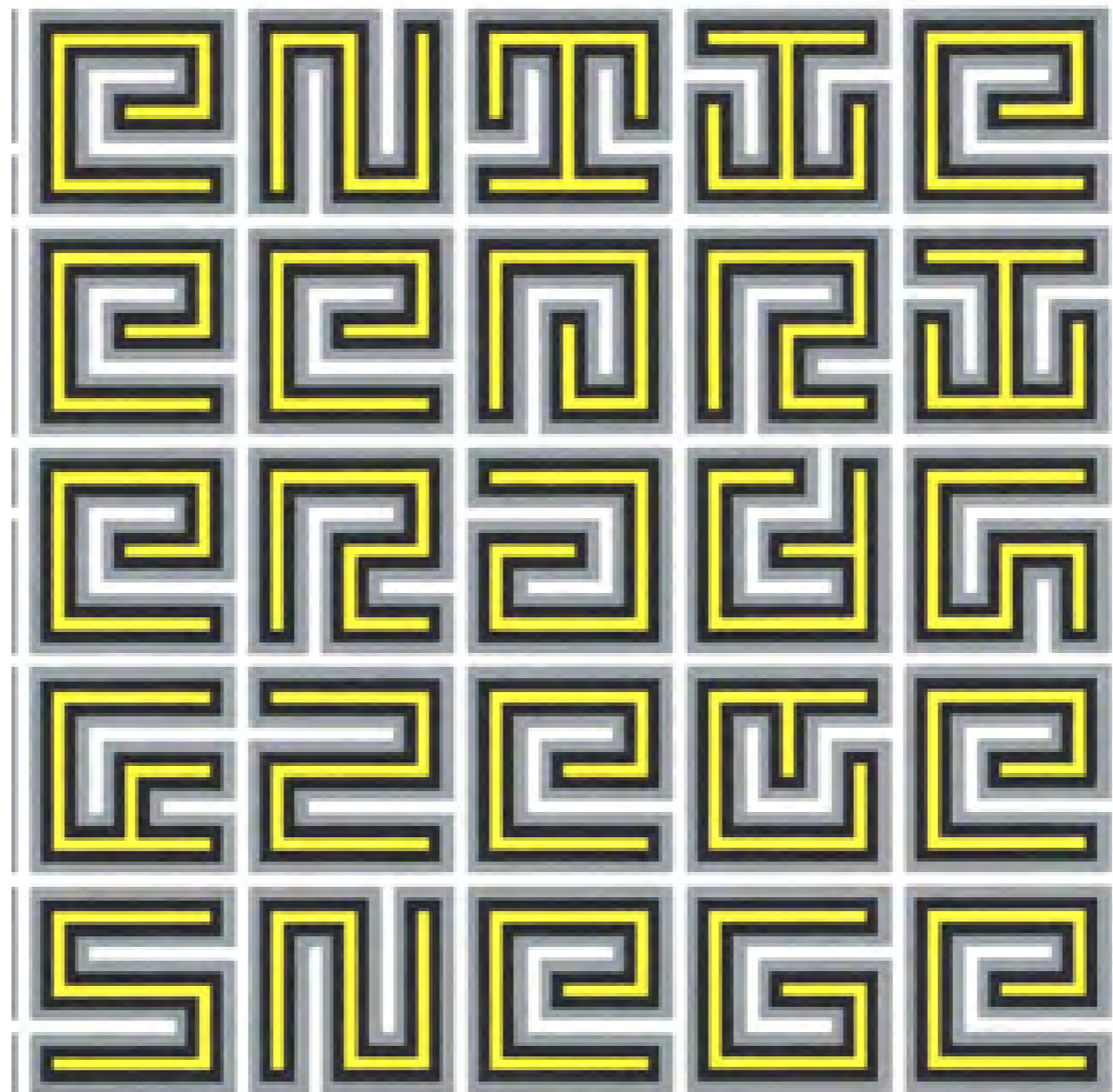
**Drawing for “koffie en thee” (coffee and tea)
for supermarket De Gruyter, 1963**



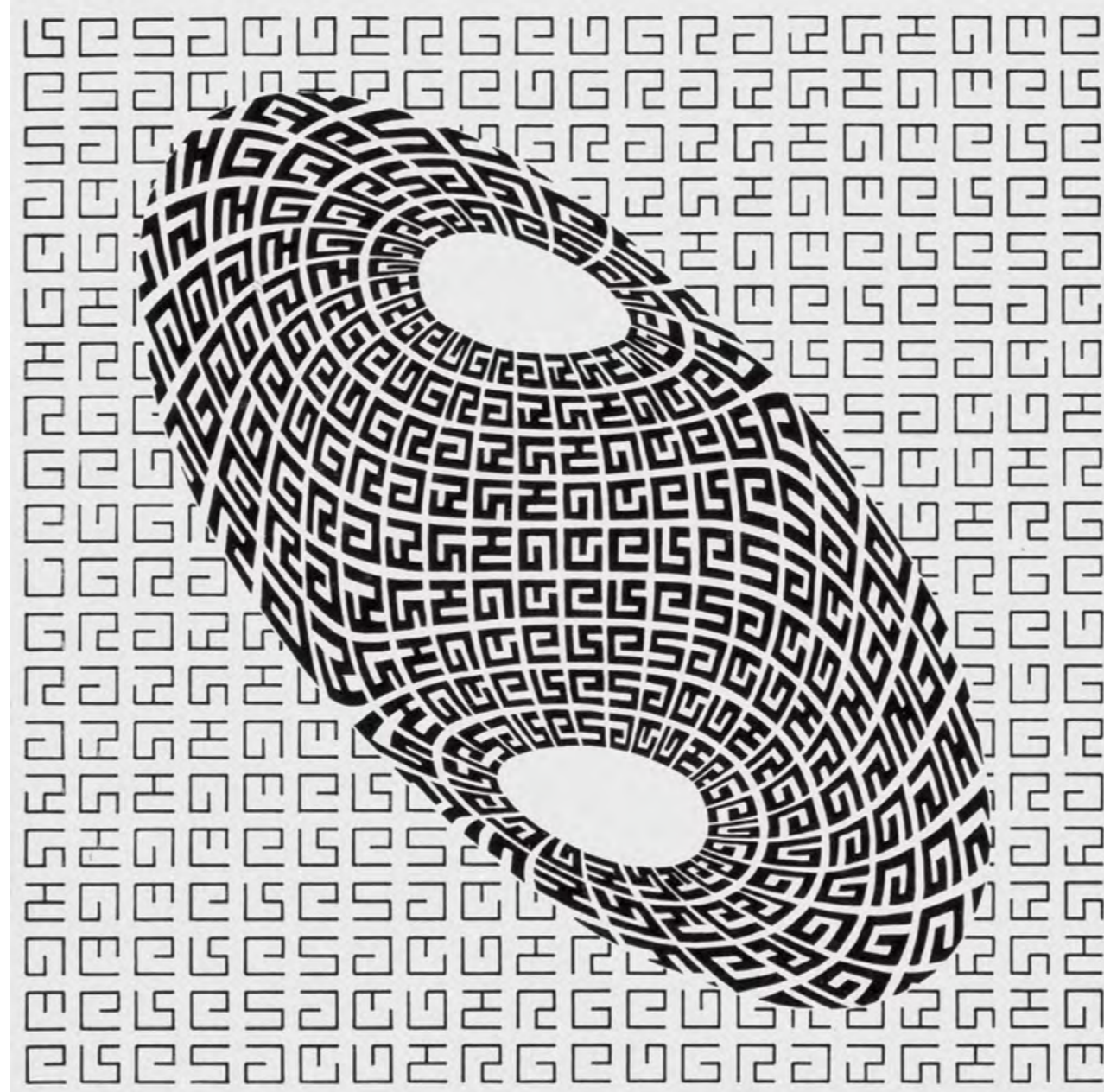
Sketch and cover for i10 The International Avant-Garde between the Two World Wars , 1963



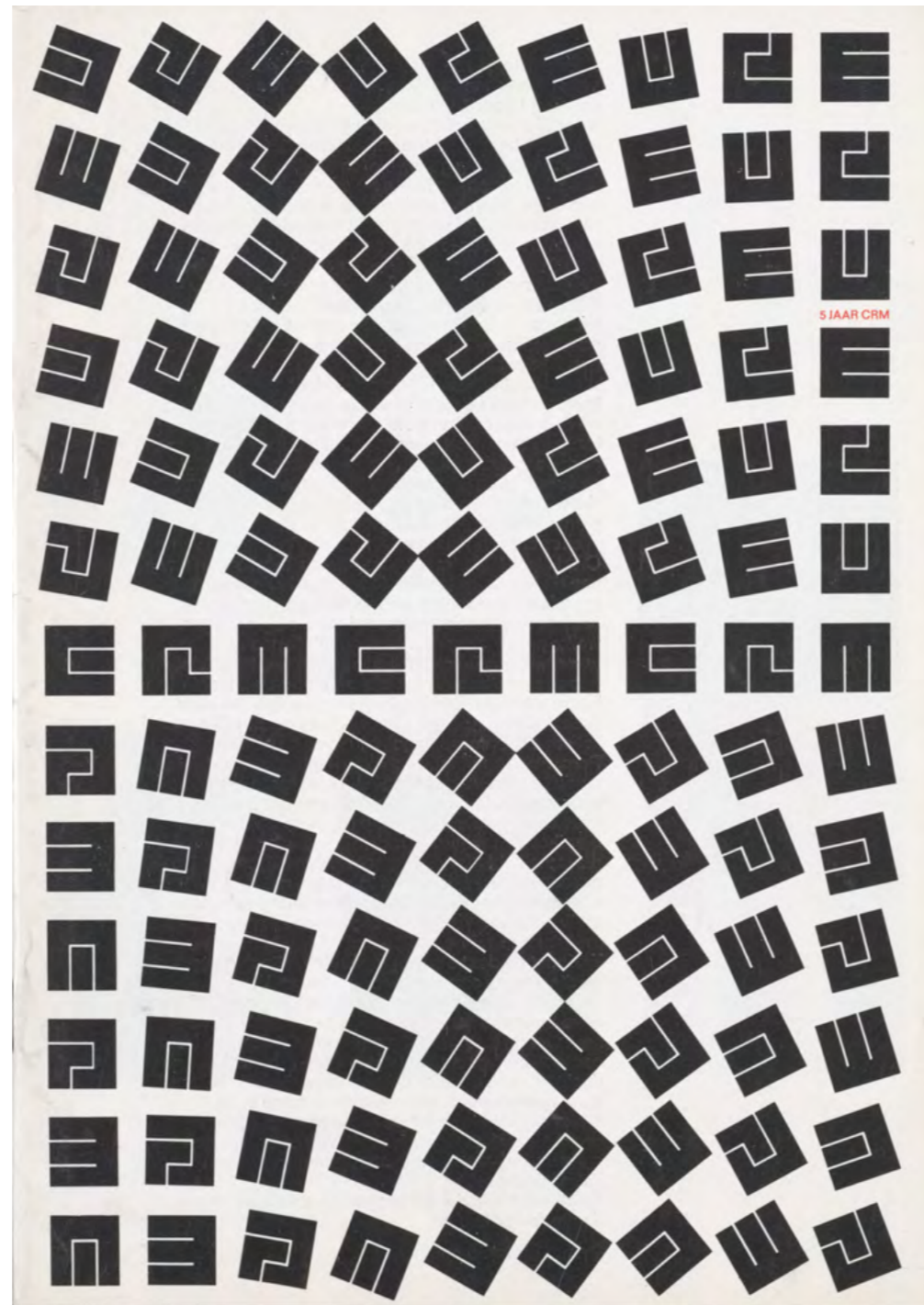
Dot letters based on a square, 1972



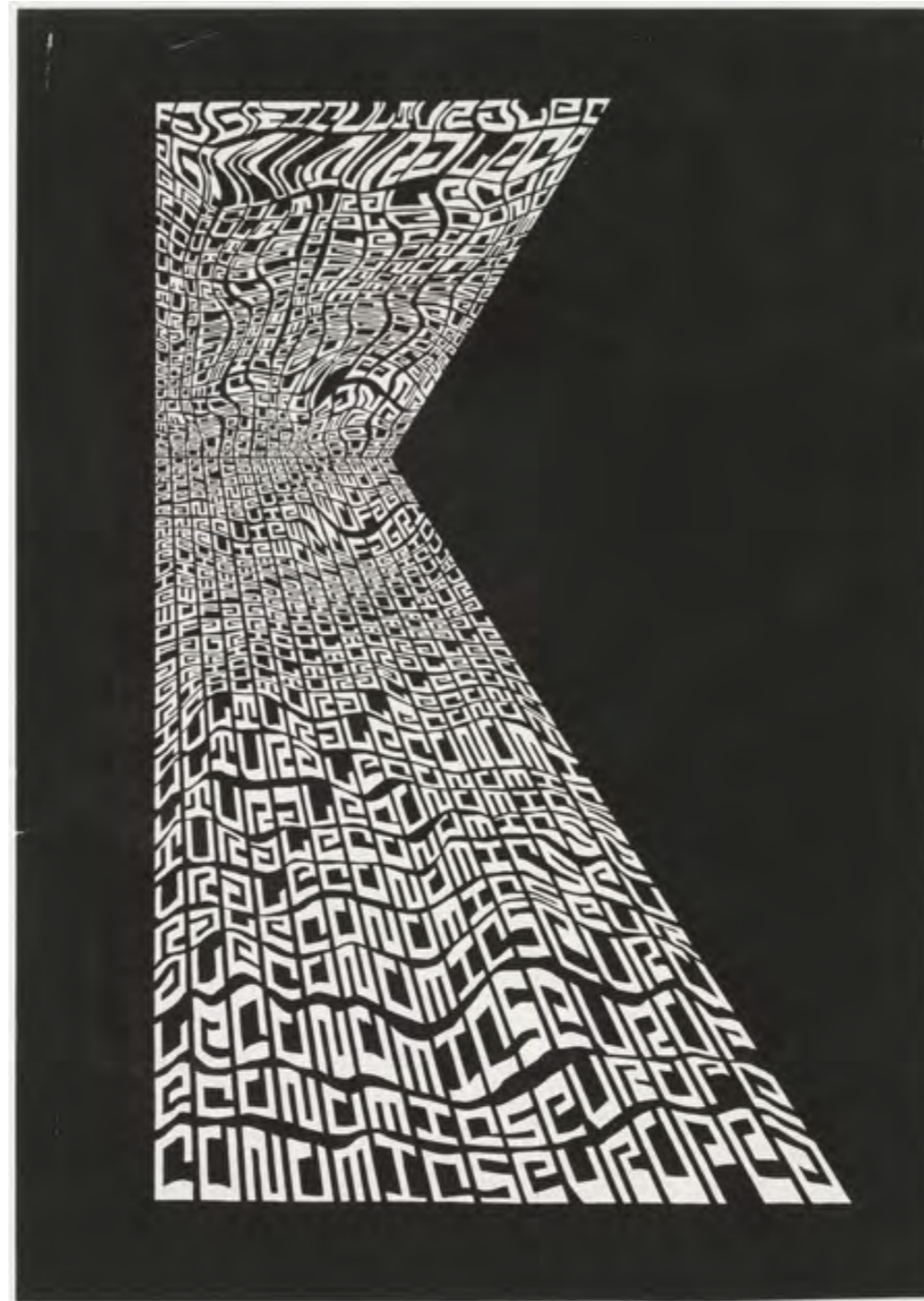
Letters based on continuous lines and contours, 1975



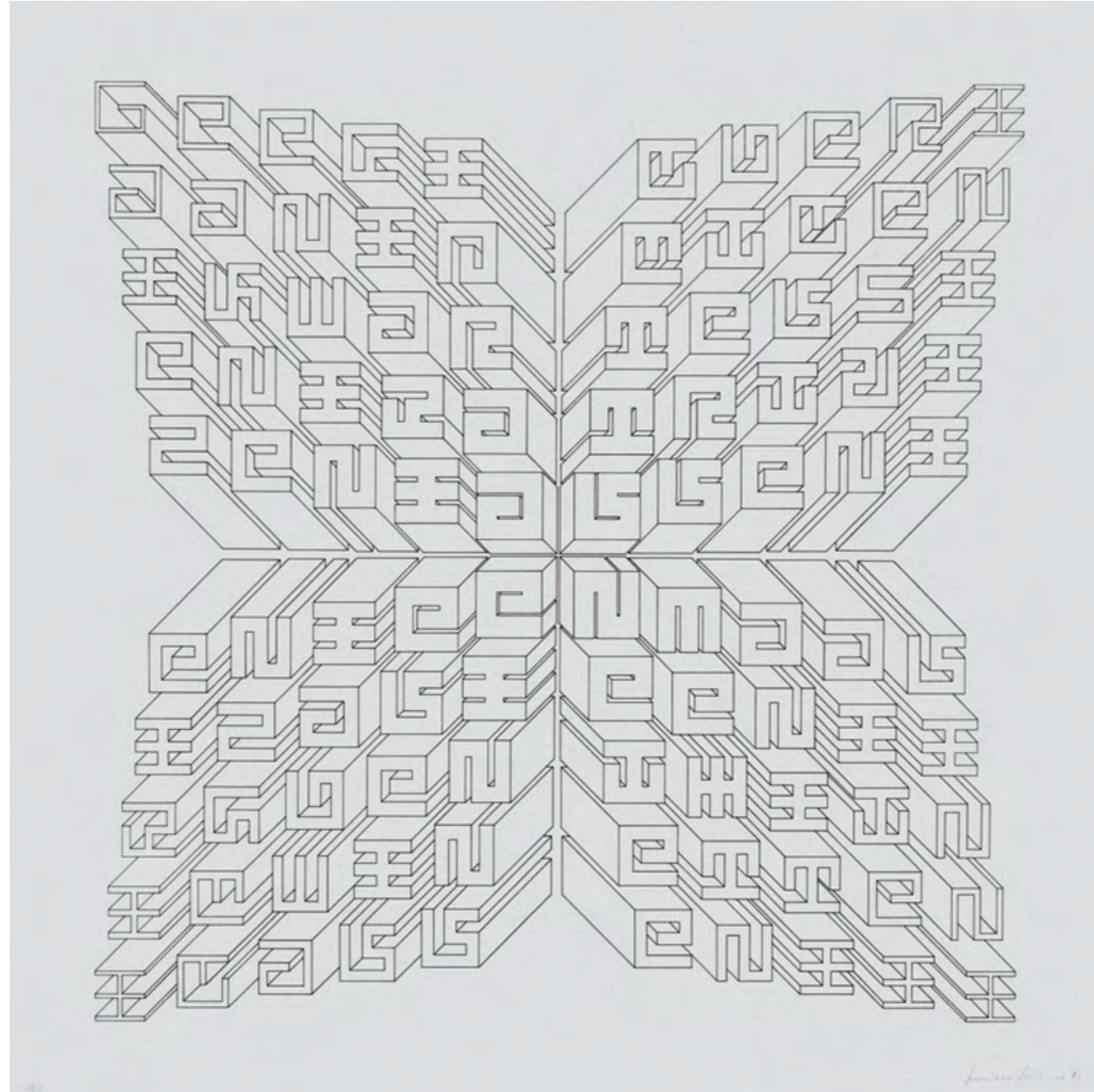
Study for a book cover series for Le Savoir Geographique, 1971



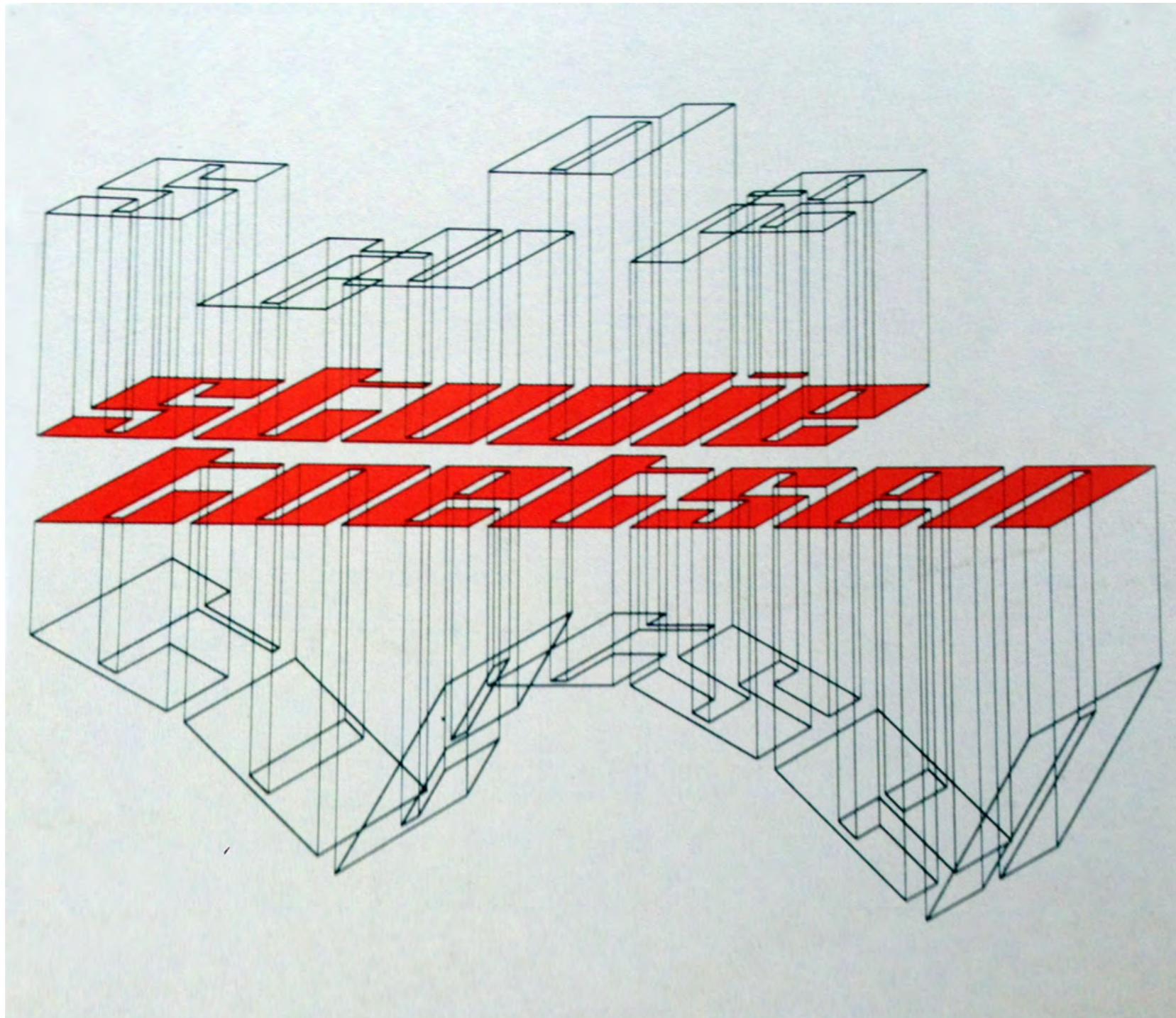
Cover of 5 jaar CRM, 1970.



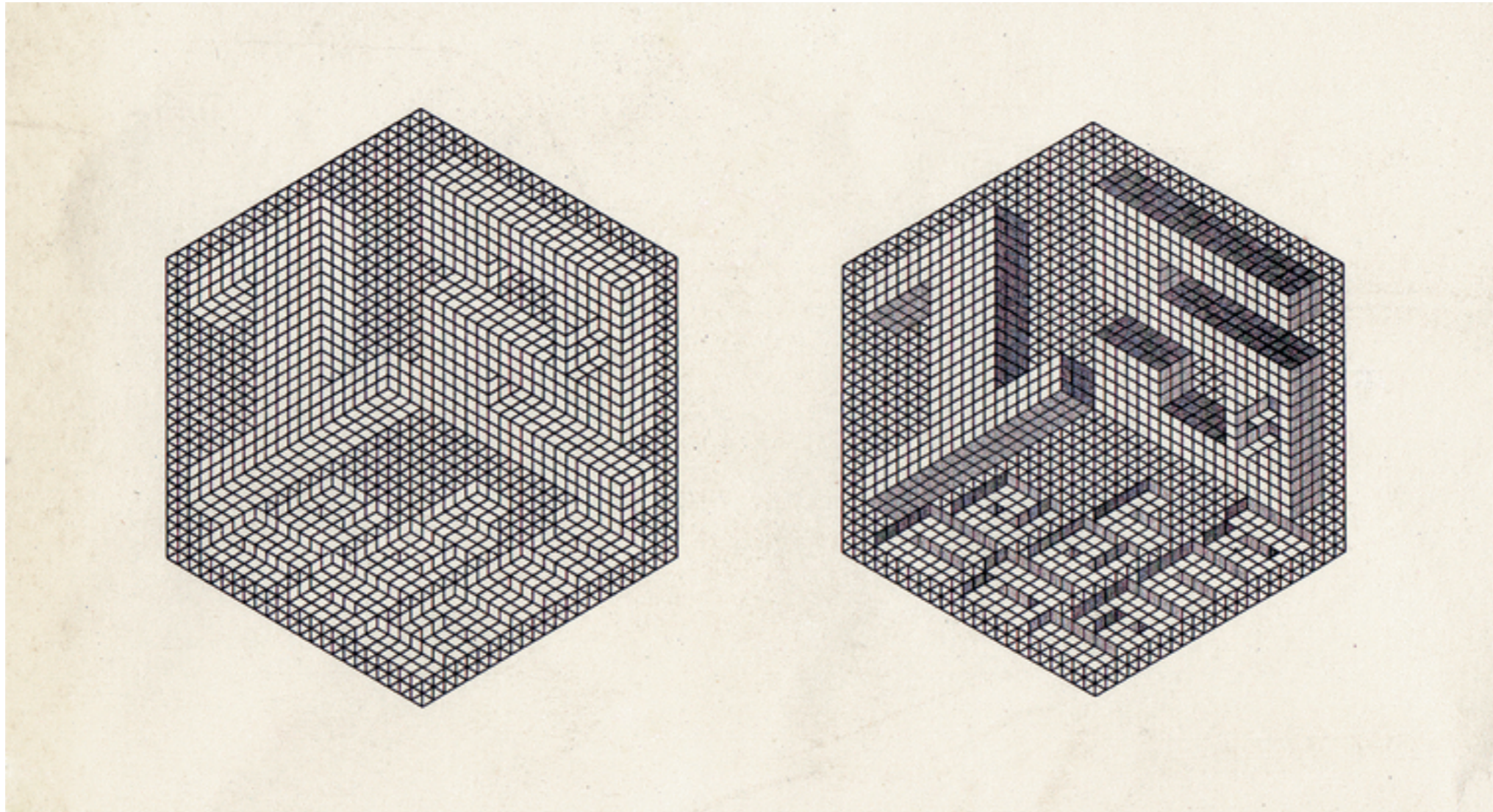
**Cover for European Journal of Agricultural Economics, 1973.
Experiment with movement and perception**



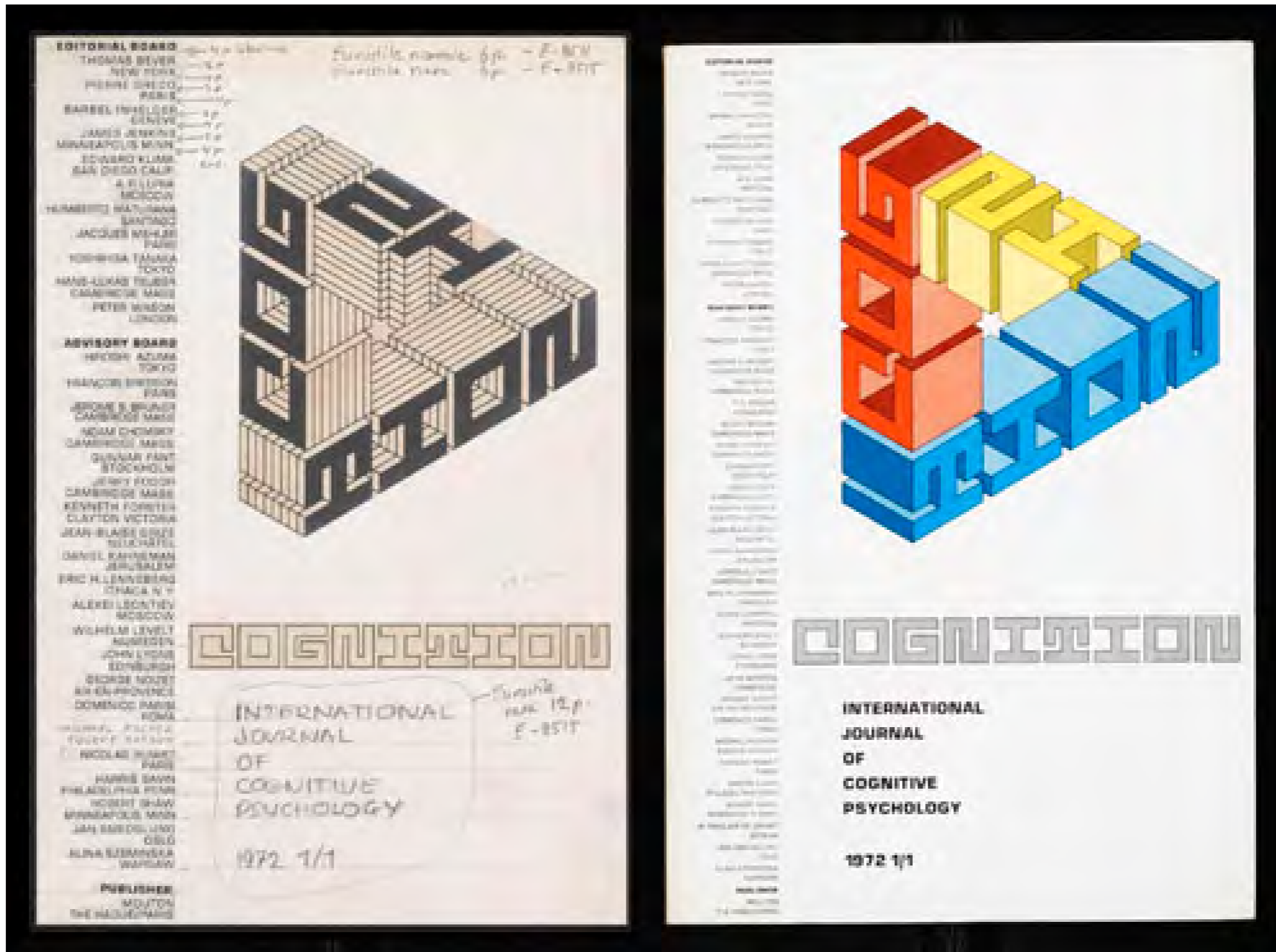
**Silk screen print, 1974.
Experiment with depth**



**Drawing for a Mouton book cover, 1969.
Experiment with depth**

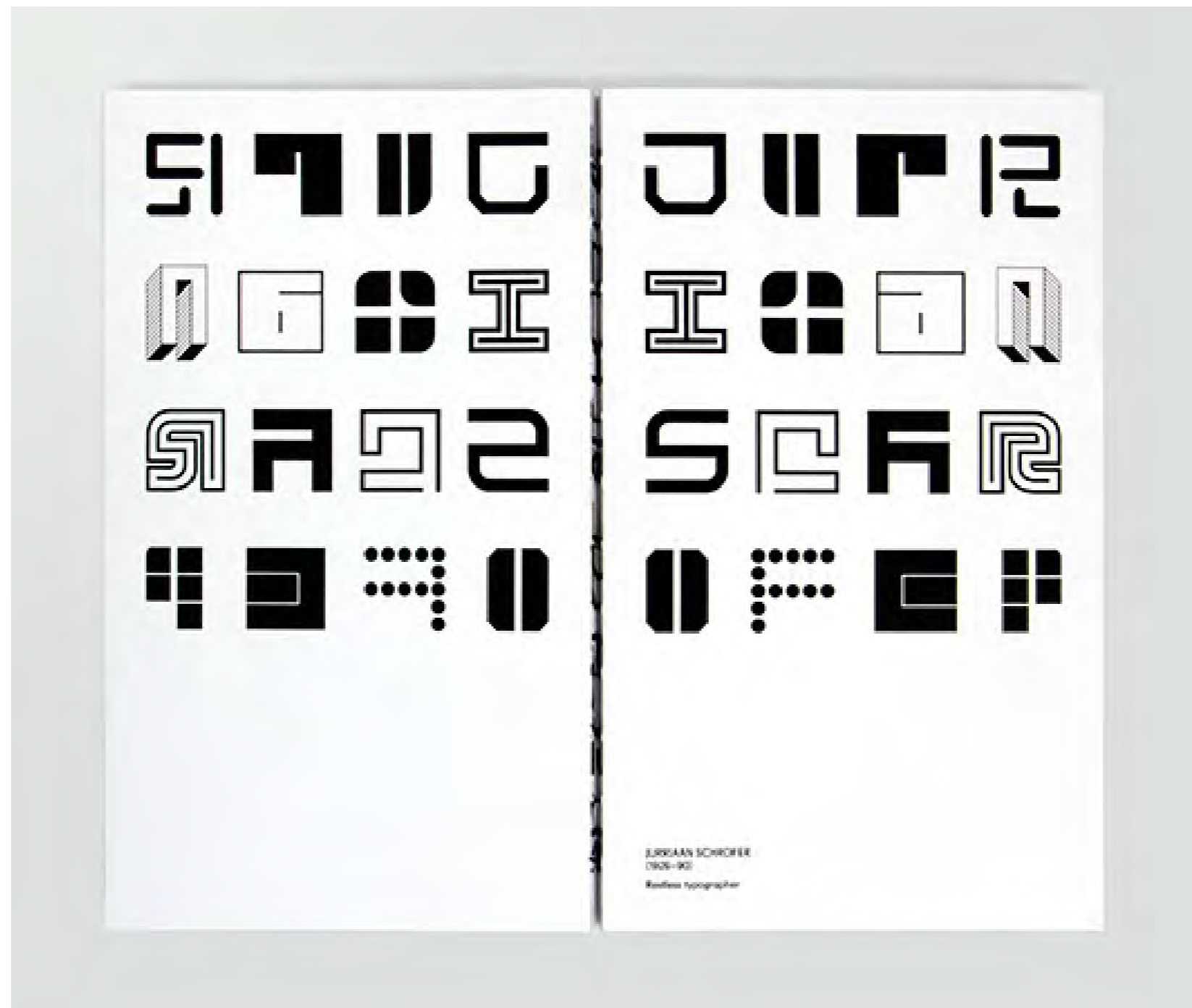


**Sketches for postcard stamps for the Dutch mail, 1971
Experiment with perspective**

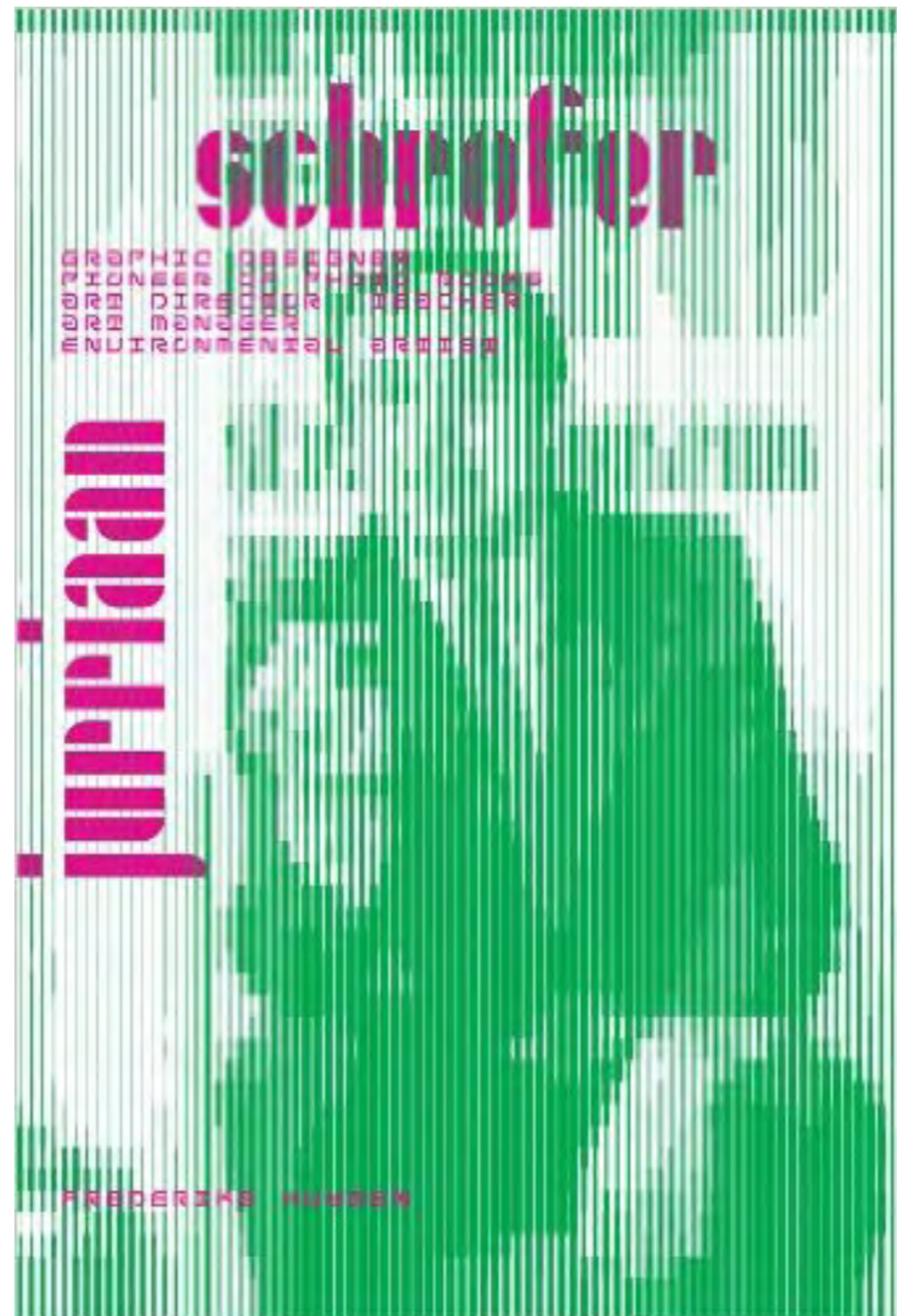


Sketch and cover for Cognition, International Journal of Psychology, 1972

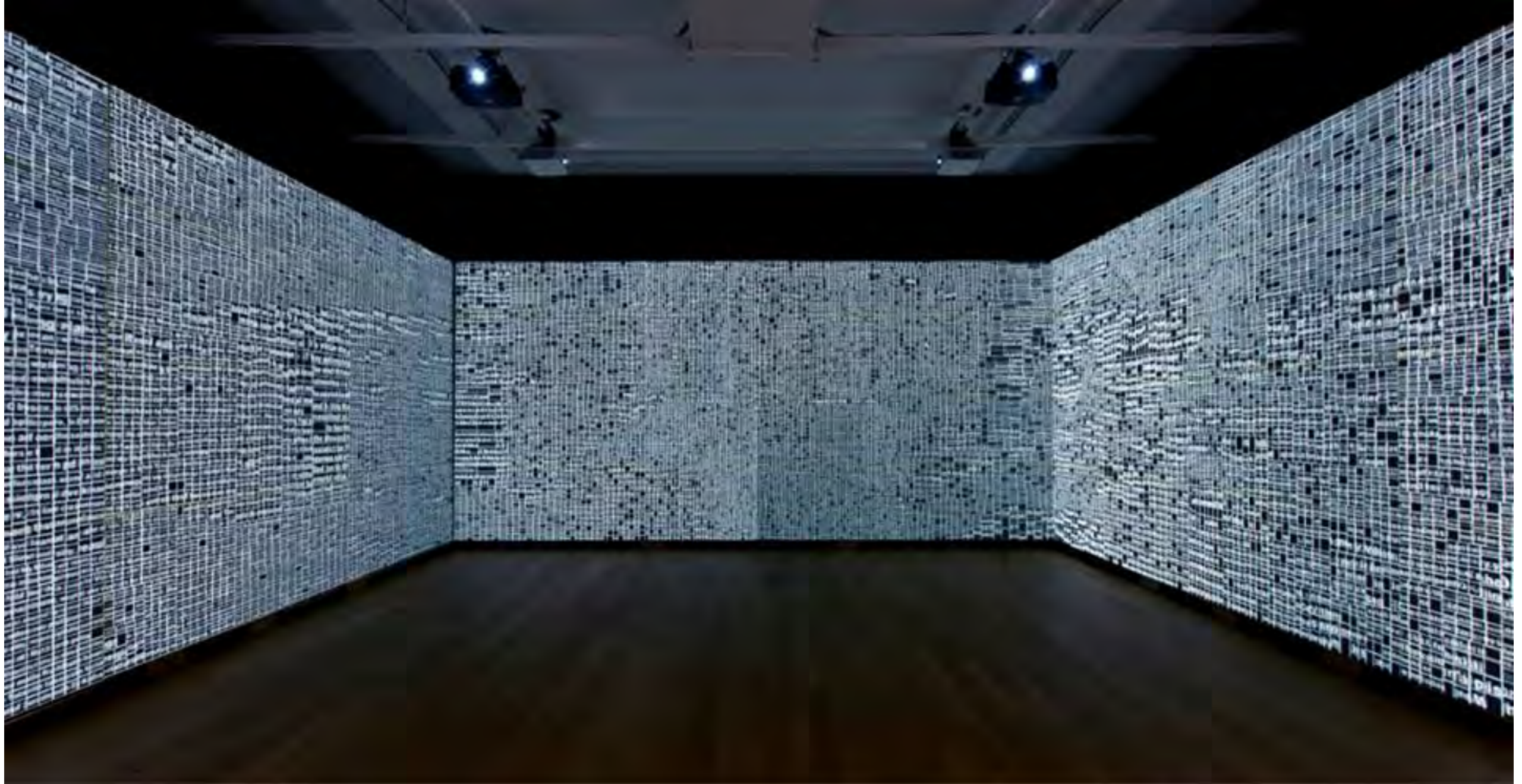
**“At a certain stage of inquiry,
it doesn’t matter at all if you things
that are useless. It’s a matter of
searching for symbols that are flexible,
that can be easily distorted.”**



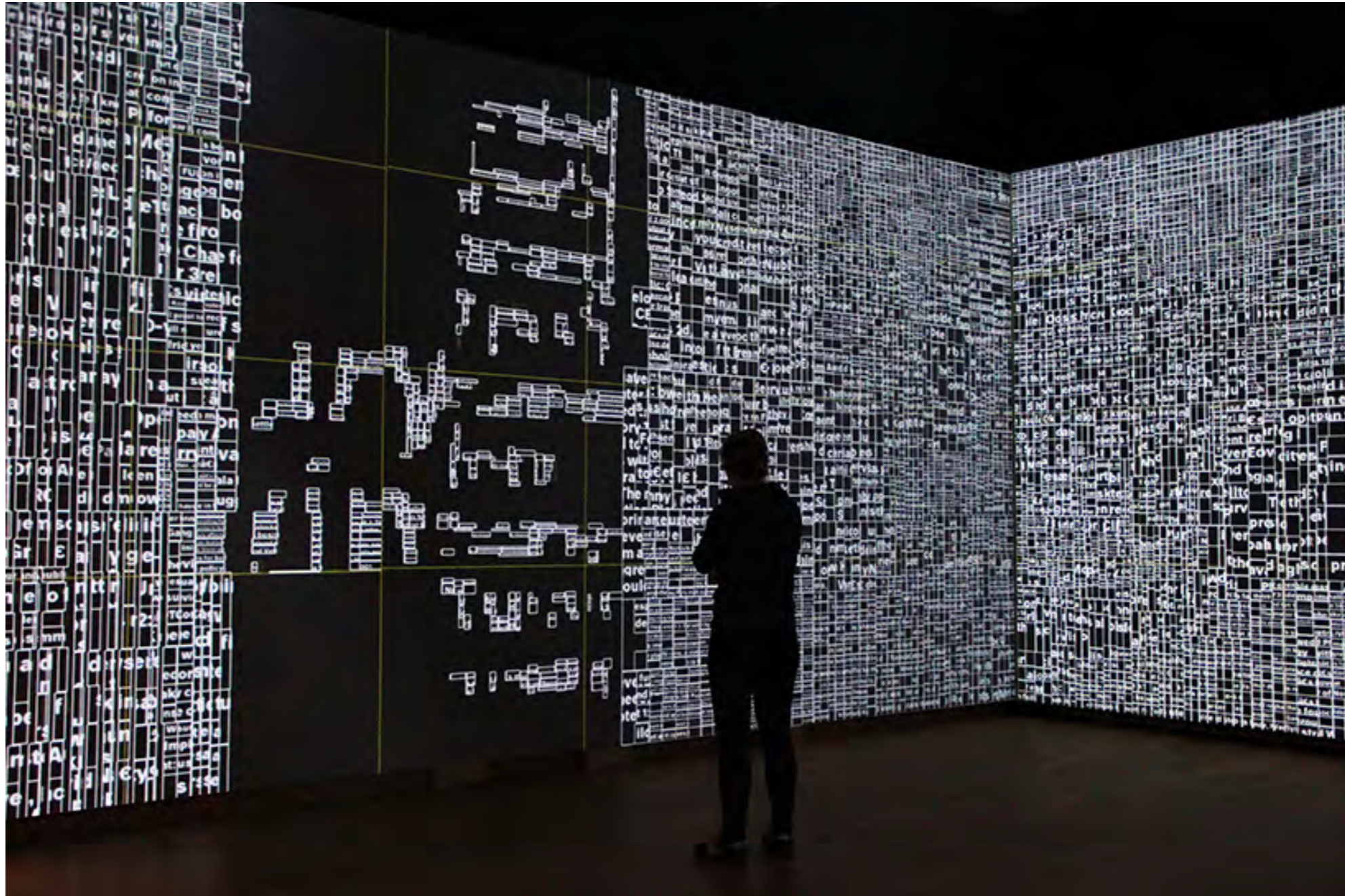
Jurriaan Schrofer: Restless Typographer
by Unit Editions, 2013



**Jurriaan Schrofer by Frederike Huygen,
Jaap Triest, Karel Martens, 2014**



**Type / Dynamics: Jurriaan Schrofer by LUST
Stedelijk Museum, Amsterdam, 2014**



**Type / Dynamics: Jurriaan Schrofer by LUST
Stedelijk Museum, Amsterdam, 2014**



**Type / Dynamics: Jurriaan Schrofer by LUST
Stedelijk Museum, Amsterdam, 2014**



**Type / Dynamics: Jurriaan Schrofer by LUST
Stedelijk Museum, Amsterdam, 2014**